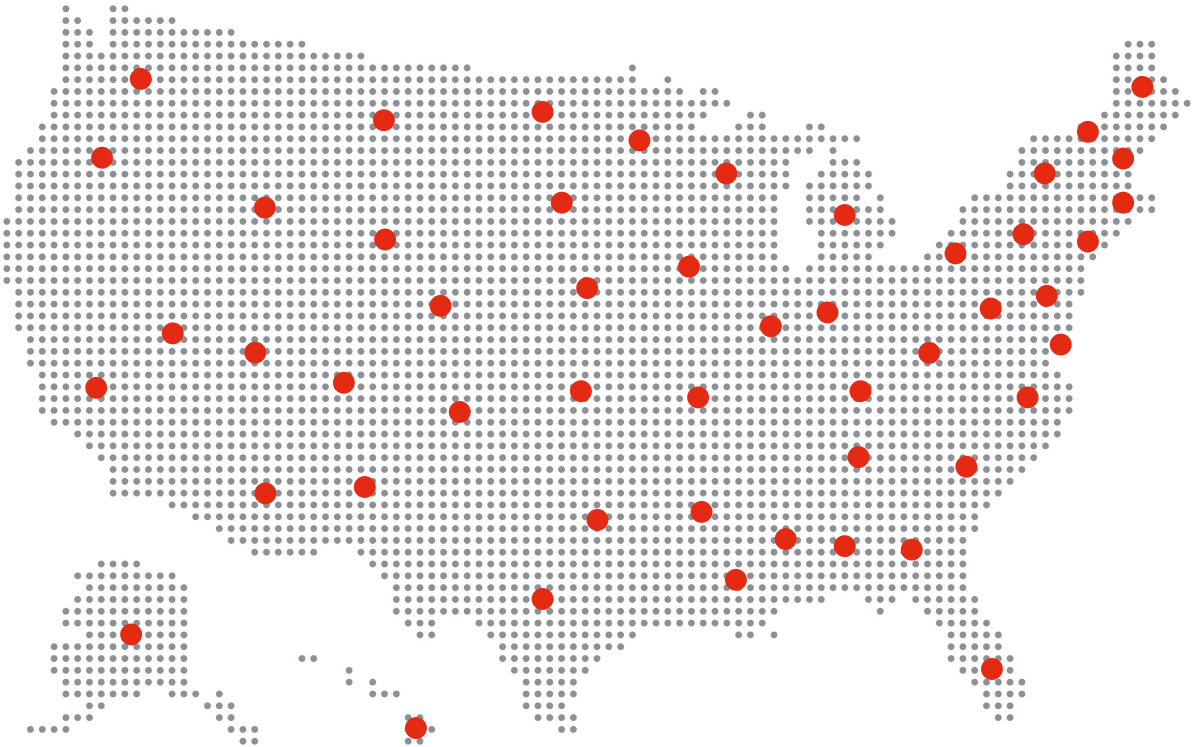


 **SHEMSS** HOME IS ART

ORDER HERE & BUILD ANYWHERE  
DESIGNER HOMES SOLUTION,  
ARCHITECTURAL PLANS, AND BUILDING  
MATERIAL DELIVERY COMPANY.



# SILVER 7.0

SHEMSS HOME IS ART



**3 BED 2 BATH 1270 SQ. FEET.**

Our Silver 7.0 model has been designed with the finest of architecture at its core with vaulted ceilings and full window walls that invite the surrounding nature into its open concept living space. You'll be inspired by a kitchen that features European cabinetry and hidden kitchen appliances. The perfect home awaits, where you'll feel the soothing benefits of nature from the decks outdoors to the expansive indoor views.

**40x38 Building Area**

## DETAILS INCLUDED IN ELITE PACKAGE

### FLOORPLAN & DESIGN DRAWINGS

#### Title Sheet

Project information: detail analysis of conditioned and unconditioned space sizes add proposed building coverage. Construction type, general notes.

#### Floor Plan

Scaled, detailed plan of the house. The fully dimensioned floor plan will show room sizes and designations, fixtures count and location, window/door sizes. If applicable, exterior porches, decks, patios will be shown. General notes, legends, and framing schedule. Proposed shear walls to be confirmed by EOR.

#### Elevations

Scaled views of the house exterior. The following sheet will indicate finished floor elevations, ceiling heights, top of windows elevations, roof slope, exterior finishes, and general notes.

#### Foundation Plan

Scaled foundation plan will indicate perimeter footing, slab-on-grade, spread footings, piers as pertinent to house design. Footing schedule, general foundation notes, legends. Foundation sizes to be confirmed EOR.

#### Floor Framing Plan

Scaled floor framing plan will include floor joist sizes, spacing, and spans. Floor girder's location, sizes, and spacing. The lower-level floor framing plan will be superimposed with the foundation plan for clarity. All framing sizes are to be confirmed by EOR.

#### Roof Plan

Scaled roof plan will show roof shape, valleys, hips, ridges, overhangs as applicable to the house. Standard 24" on-center truss spacing will be shown, to be confirmed by EOR.

#### Sections

Scaled building cross sections for both transverse and longitudinal direction showing plate heights, proposed insulation location, foundation, finished grades, and other framing components. To be confirmed by EOR for local jurisdiction compliance.

#### Mechanical Plan

Proposed gas diagram with rise and run information, to be confirmed by plumbing/mechanical contractor to comply with local jurisdiction. Proposed hose bibs, exterior outlets, and mechanical equipment location as applicable. General notes, legends, schedules.

#### Electrical Plan

Electrical light fixture's location and types and corresponding switches. Smoke and carbon monoxide detectors, outlets. General notes, legends, schedules.

### STRUCTURAL BUILDING MATERIAL

#### Material List

Shows the quantity, dimensions, and specifications for the major materials needed to build your home. You will get faster, more accurate bids while avoiding having to pay for unused materials and waste. Material lists are available for all model plans (except as otherwise indicated), but only accessible with the purchase of floorplan & design drawings.



## EXTERIOR & INTERIOR DESIGN PACKAGE

References to links may be broken due to updates or other vendor website modifications, SHEMSS Design Sheet cannot and does not guarantee or control third-party vendor product links or websites to work indefinitely. Similarly, just as links can be broken, so can the actual product be discontinued. SHEMSS Design Sheet cannot and does not guarantee or control third-party vendor production, manufacturing, or product availability to be on the market. Links and products are referenced at the time of the design. In cases that the link is broken, try a wider search by product name and description.

### Design Sheet Example:



22 SHEMSS DESIGNER HOME MODEL PALOMA



DRIVEWAY DRAIN SYSTEM | qty 06  
GALVANIZED STEEL SLOT DRAIN SYSTEM

PRODUCT LINKS  
[https://handramp-usa.com/products/galvanized-steel-slot-drain-system/?utm\\_source=google&utm\\_medium=organic](https://handramp-usa.com/products/galvanized-steel-slot-drain-system/?utm_source=google&utm_medium=organic)



HANDRAIL | qty 01  
AHR ALUMINUM WALL HANDRAIL W/ MOUNTS

PRODUCT LINKS  
<https://www.aluminumhandrailand.com/products/aluminum-wall-handrail>



SHEMSS INTERIOR FINISHES



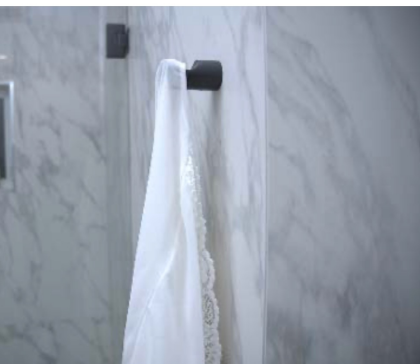
PAPER HOLDER | qty 01  
MATTE BLACK TOILET PAPER HOLDER, APLUSEE STAINLESS STEEL HALF OPEN ROUND TISSUE ROLL HANGER, BATHROOM KITCHEN STORAGE

PRODUCT LINKS  
[https://www.amazon.com/gp/product/B07Q8BPF3H/ref=as\\_li\\_tl?ie=UTF8&th=1](https://www.amazon.com/gp/product/B07Q8BPF3H/ref=as_li_tl?ie=UTF8&th=1)

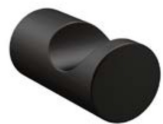


FAUCET | qty 01  
LOVEDIMA SOLID BRASS MODERN WALL-MOUNT BATHROOM SINK FAUCET WITH SINGLE HANDLE IN BLACK FINISH

PRODUCT LINKS  
[https://www.amazon.com/gp/product/B07Q8BPF3H/ref=as\\_li\\_tl?ie=UTF8&th=1](https://www.amazon.com/gp/product/B07Q8BPF3H/ref=as_li_tl?ie=UTF8&th=1)



124 SHEMSS DESIGNER HOME MODEL PALOMA



ROBE HOOK | qty 03  
MOEN YB040BL ALIGN MODERN SINGLE ROBE HOOK, MATTE BLACK

PRODUCT LINKS  
[https://www.amazon.com/gp/product/B081Y50118/ref=as\\_li\\_tl?ie=UTF8&th=1](https://www.amazon.com/gp/product/B081Y50118/ref=as_li_tl?ie=UTF8&th=1)



SINK DRAIN | qty 01  
NEARNOON BATHROOM POP UP DRAIN BRASS SINK DRAIN STRAINER FOR BATHROOM ASSEMBLY STOPPER VESSEL SINK, ANTI-CLOGGING (WITHOUT OVERFLOW, MATTE BLACK)

PRODUCT LINKS  
[https://www.amazon.com/HeadMoon-Bathroom-Strainer-Assembly-Anti-Clogging/dp/B081Y50118/ref=as\\_li\\_tl?ie=UTF8&th=1](https://www.amazon.com/HeadMoon-Bathroom-Strainer-Assembly-Anti-Clogging/dp/B081Y50118/ref=as_li_tl?ie=UTF8&th=1)



## MATERIAL INCLUDED IN THE ELITE PACKAGE

SILVER 7.0
<b>Decking:</b> Composite Decking
<b>Interior Doors:</b> HDF Material Solid Doors
<b>Interior Accent Walls:</b> WPC wall panels
<b>Flooring:</b> Engineered Hardwood 13mm
<b>Closet:</b> Anatomy of HDF
<b>Cabinets   Hardware:</b> HDF Doors Cabinets Box CDX Plywood
<b>Countertop   Backsplash:</b> Pre-cut Stone
<b>Vanity   Countertops:</b> Sink, Mirrors Combo

### Limited Product Warranty:

Warranty is valid for all shipped materials by SHEMSS Homes Inc. Covers defects in material and shipping-related damages only. Materials are designed to stand the test of time for regular residential use.

### Exclusions:

Does not cover products that have been stored, assembled, installed incorrectly, altered, or cleaned with the wrong cleaning methods or products. It also does not cover accidental damage. Does not cover regular wear and tear.

### Product Inspection:

Products must be inspected for defects within a reasonable time of 1-year post-delivery date in order to claim defect warranty. The product must be inspected for shipping damages within the first 30 days of delivery in order to claim shipping damages. Accidental damages caused by the client; a third party hired help will not be covered. Sufficient proof of shipping-related damage must be presented with photography and video with a digital time stamp.

### Disclaimer:

Modeled product and their relative interior design and materials as seen in the photographed images and posted videos are subject to change due to product availability, design development, enhancement, or smart efficiency. Discontinued products and materials will be replaced and substituted with the next best alternative match.



## Shipping & After-Sales Service



### **MATERIAL DELIVERY COMPANY**

Meeting delivery deadlines is a requirement of every job, and we make it a priority to meet ours. Our transport services work in an effective manner. Our packages are all at a fixed price contract. After the transaction processes, our warehouse will get to work right away, and our services will have your building material delivered in 4 -10 weeks right to the job site.



### **ASSISTANCE**

A job distribution from SHEMSS means full service. We have a designer homes solution, and we promise our customers assistance in a timely, consistent, and efficient manner. Our service will not only save you time, but it will also cut the time in half of traditional construction. This is the way to ensure all-round satisfaction for both parties for the work delivered.



### **CERTIFICATIONS**

Manufacturing means giving a firm undertaking to those who will build with our materials because your trust in SHEMSS Homes is important to us. Therefore, we have certified all our materials with highest quality giving our customers the opportunity to have a modern designer home with quality craftsmanship.

## Selling designer home plans online.

We offer 3 packages at a fixed contract — Elite, Premium, and Classic. Simply choose from one of our three packages and consolidate every step into one delivery. SHEMSS Homes, Inc. Designer homes solution, Architectural plans, and Building material delivery company.



**SHEMSS Homes Inc.**

1034 Emerald Bay Rd #444 South Lake Tahoe, CA 96150 USA.  
Copyright © 2022 SHEMSS Homes inc. All rights reserved.  
Contact: 888-960-5263 [info@shemsshomes.com](mailto:info@shemsshomes.com)